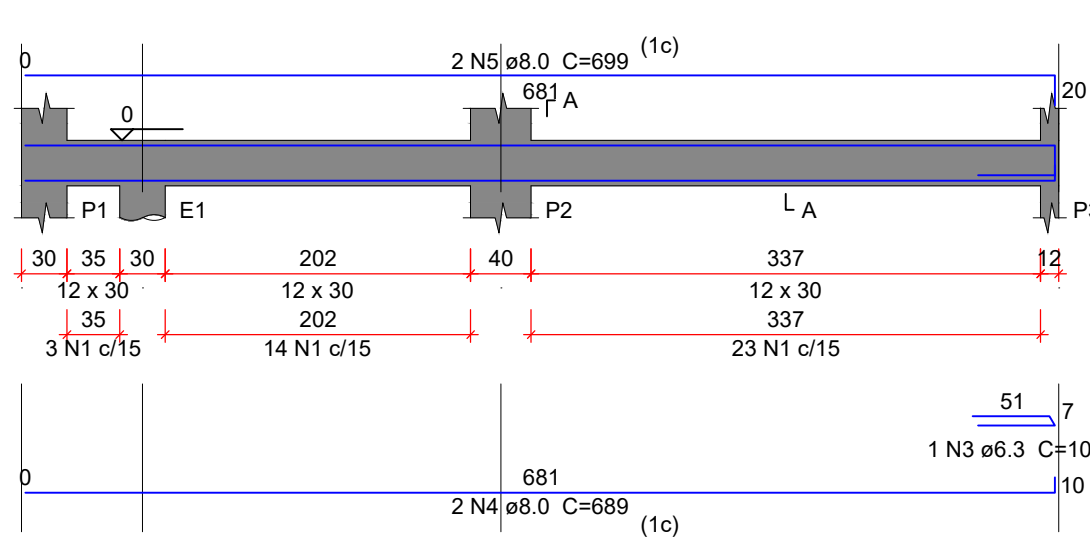


# VIGAS BALDRAMES

Fck = 25MPa

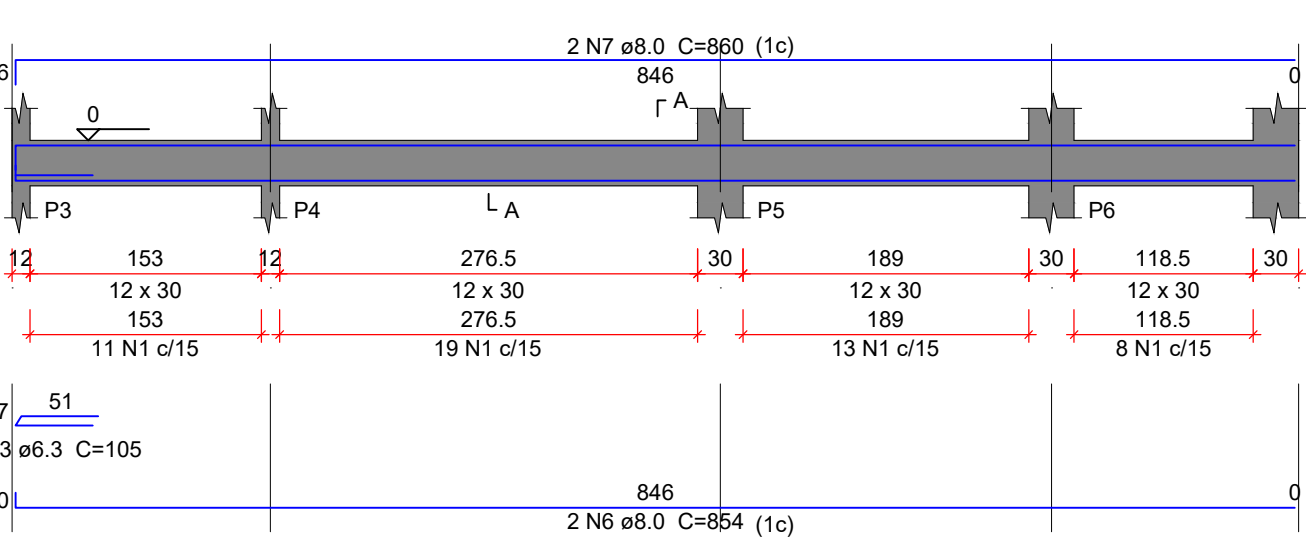
VB1

ESC 1:50



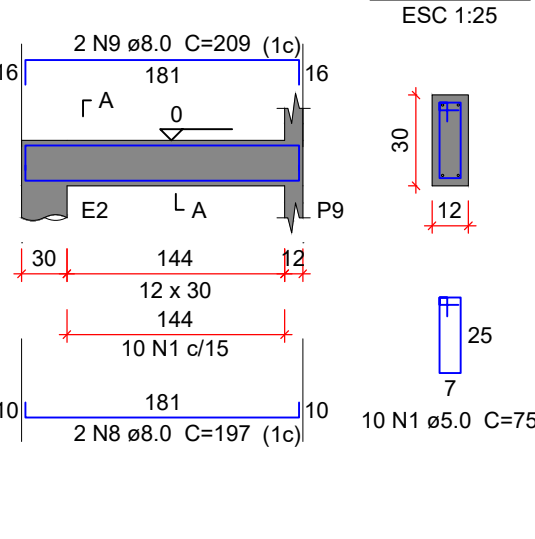
VB2

ESC 1:50



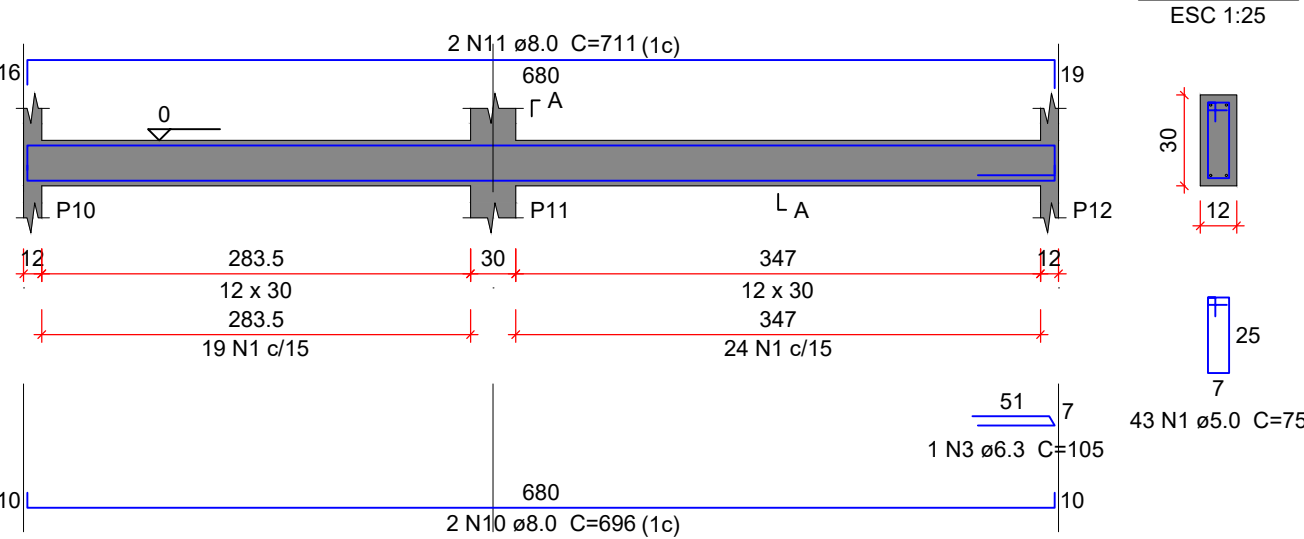
VB3

ESC 1:50



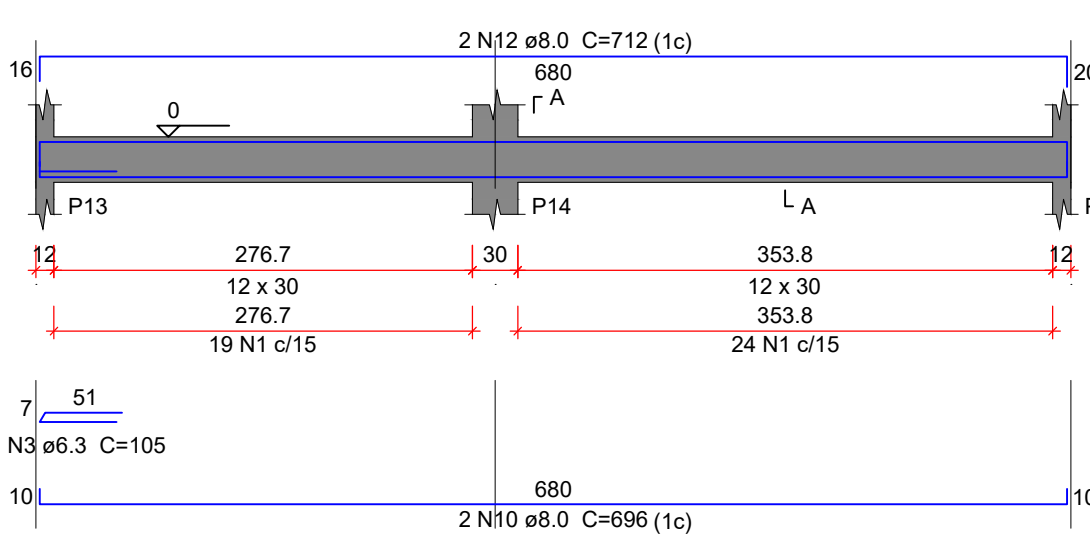
VB4

ESC 1:50



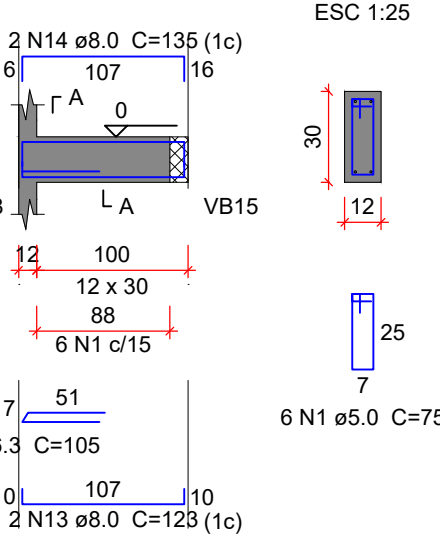
VB5

ESC 1:50



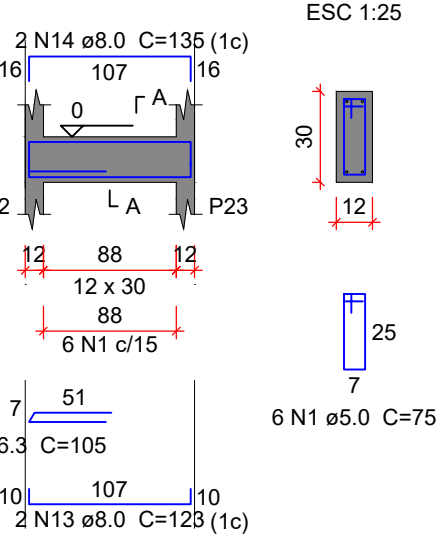
VB6

ESC 1:50



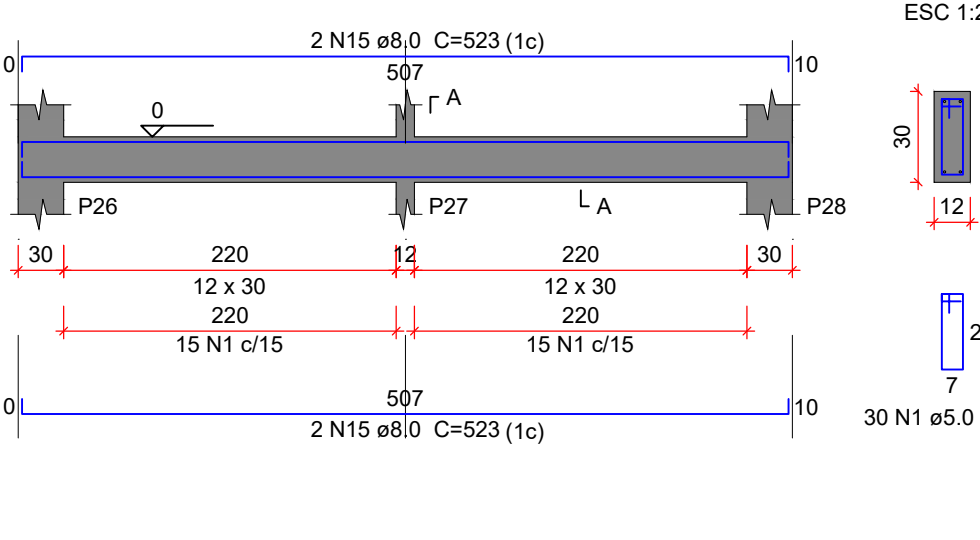
VB7

ESC 1:50



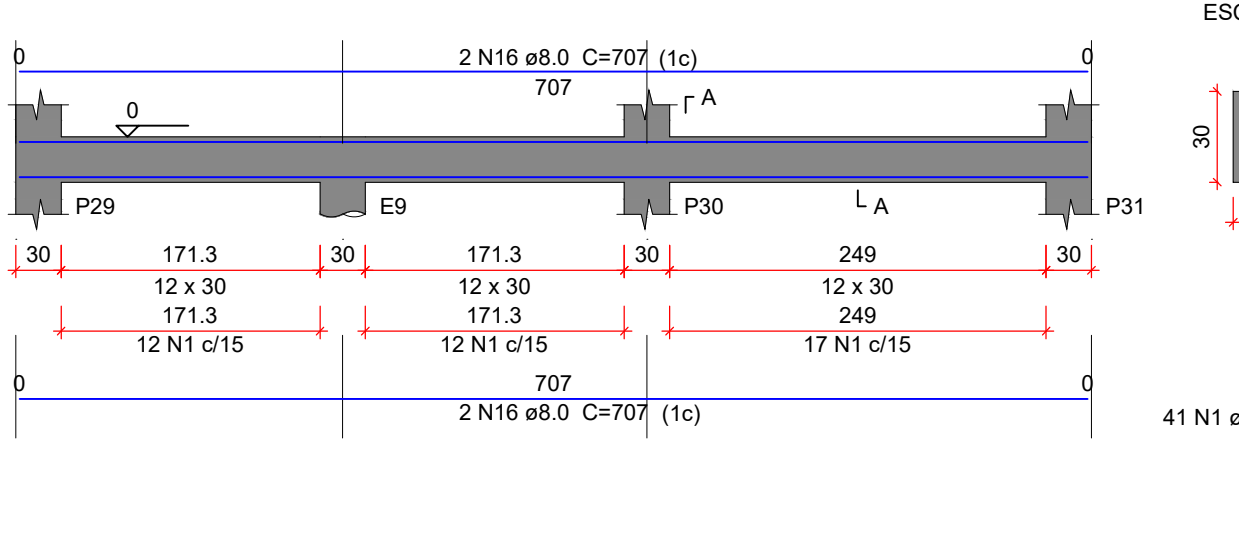
VB8

ESC 1:50



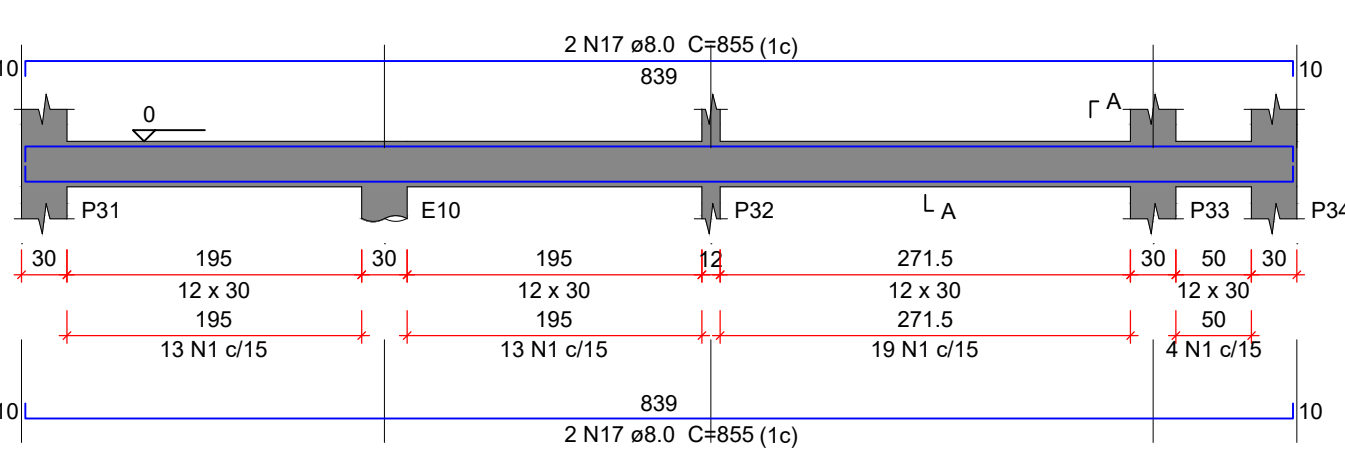
VB9

ESC 1:50



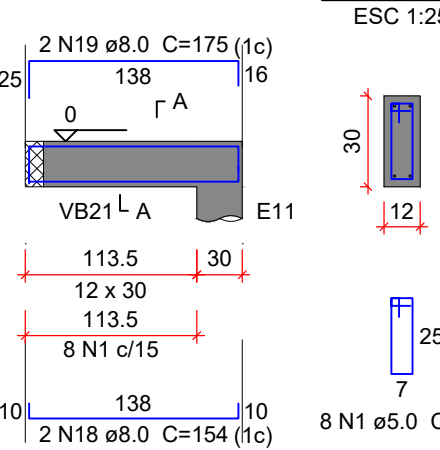
VB10

ESC 1:50



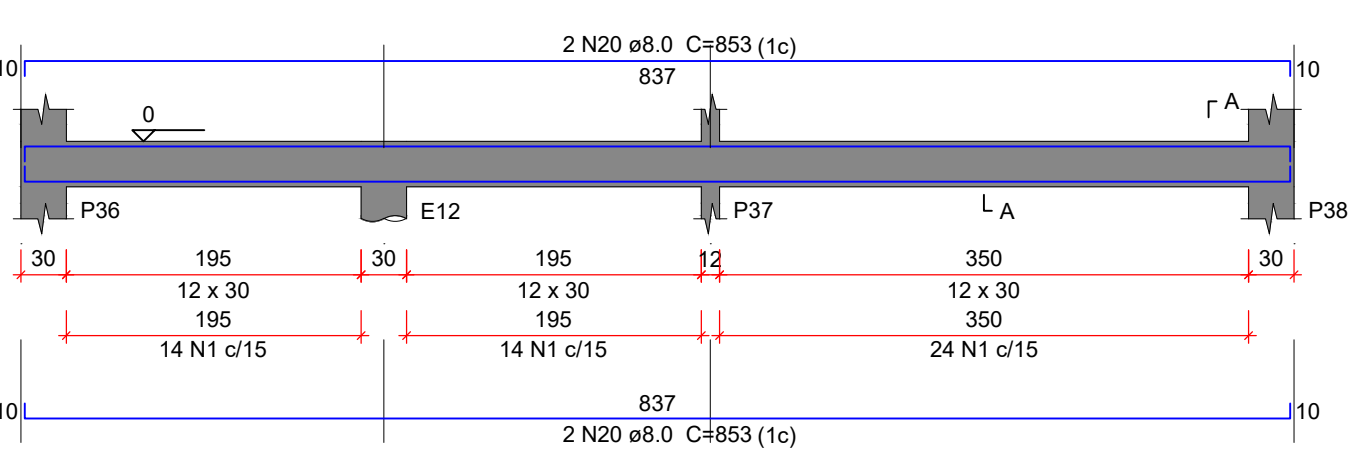
VB11

ESC 1:50



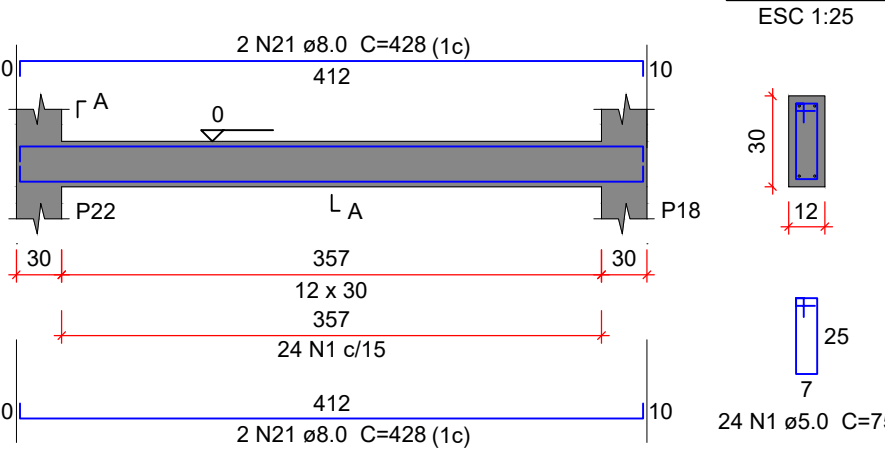
VB12

ESC 1:50



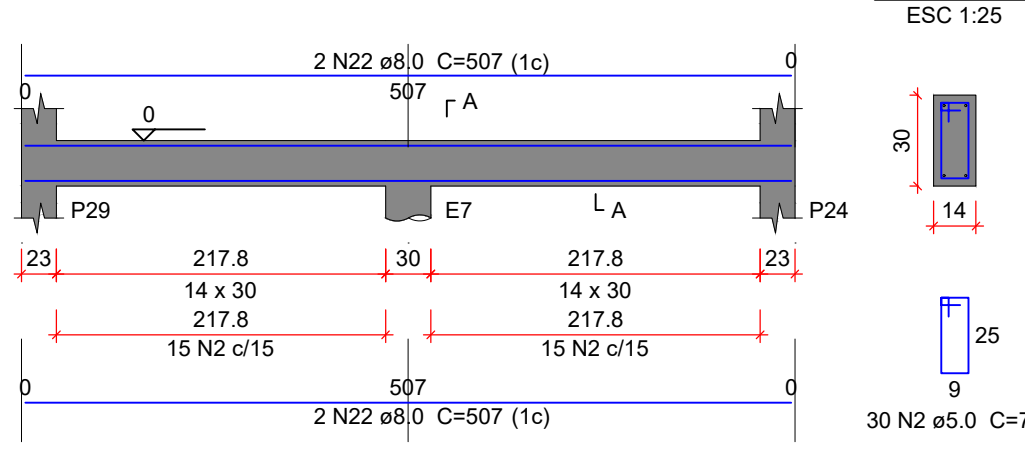
VB13

ESC 1:50



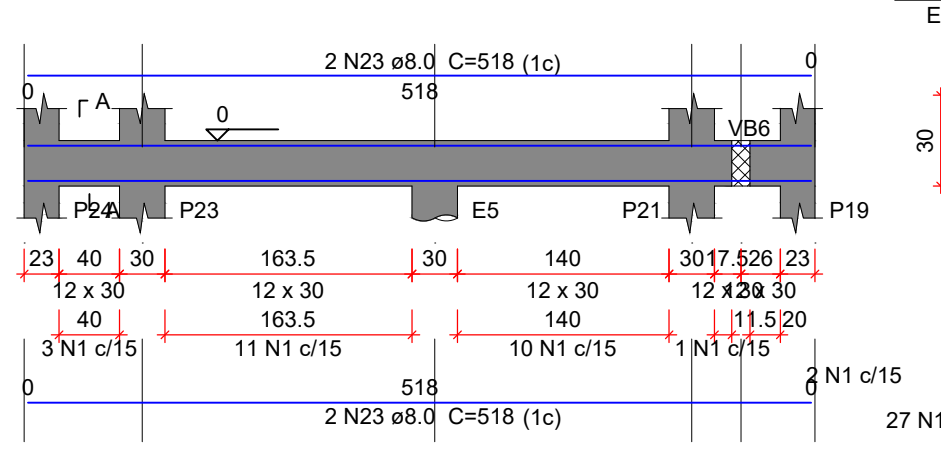
VB14

ESC 1:50



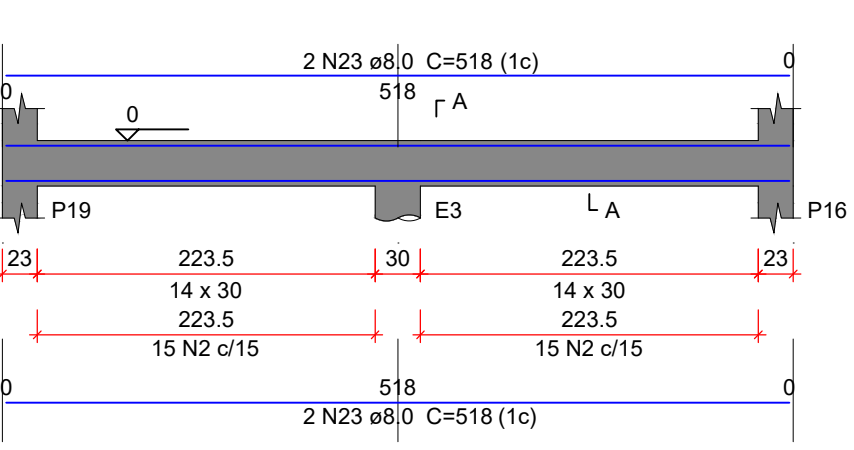
VB15

ESC 1:50



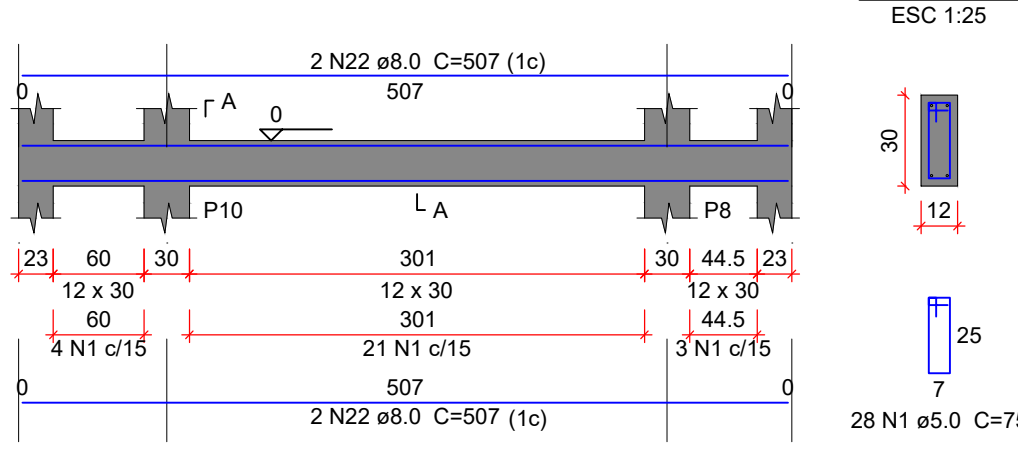
VB16

ESC 1:50



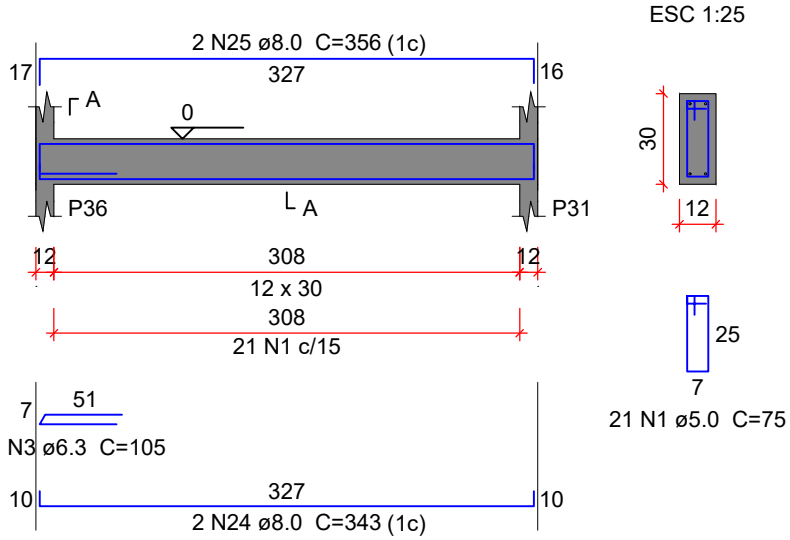
VB17

ESC 1:50



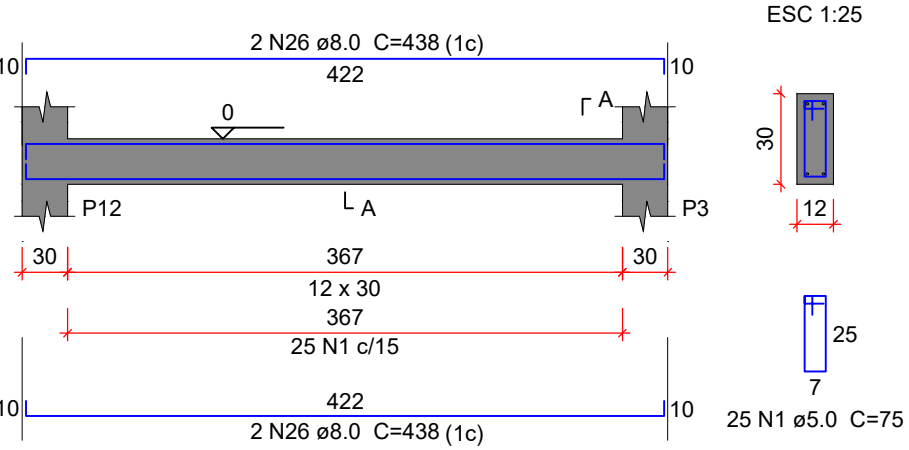
VB18

ESC 1:50



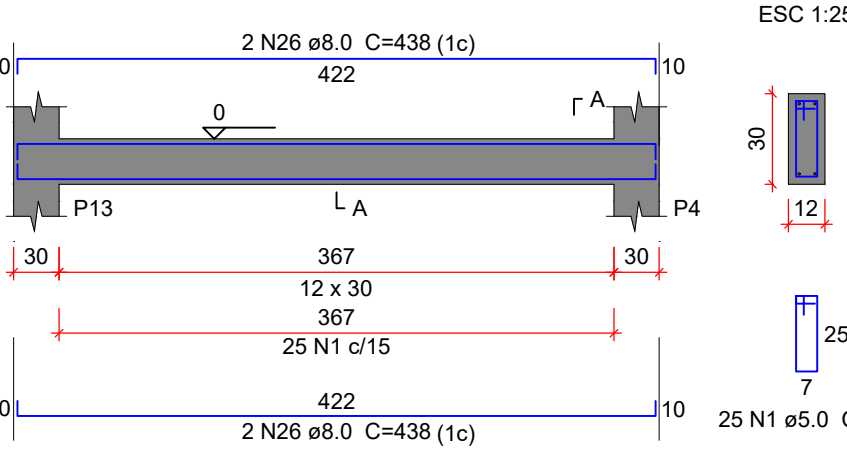
VB19

ESC 1:50



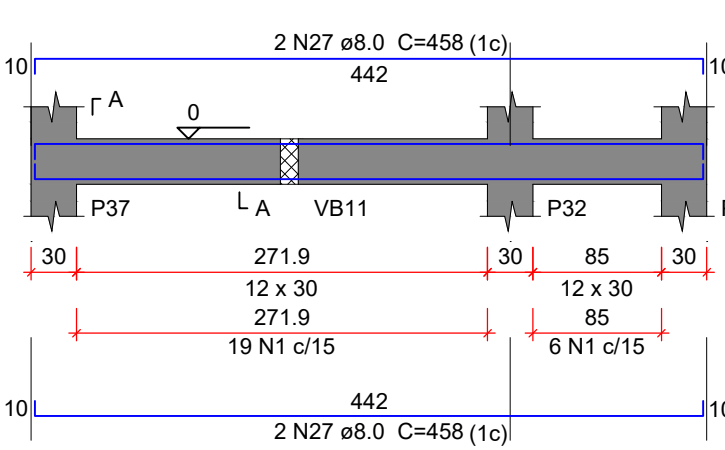
VB20

ESC 1:50



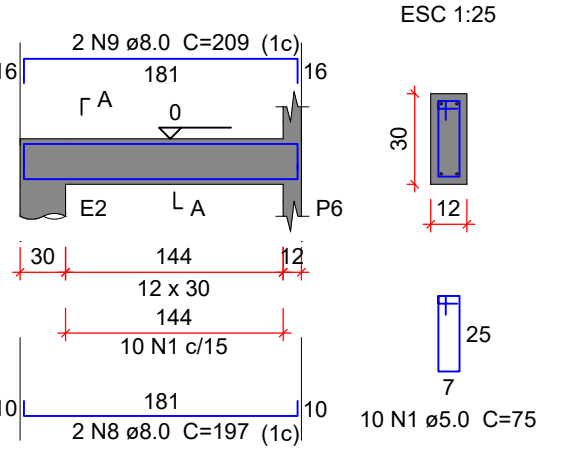
VB21

ESC 1:50



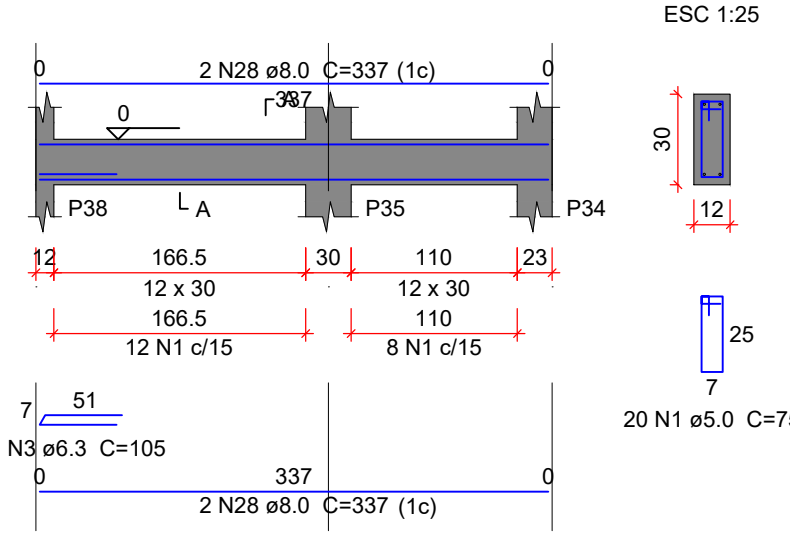
VB22

ESC 1:50



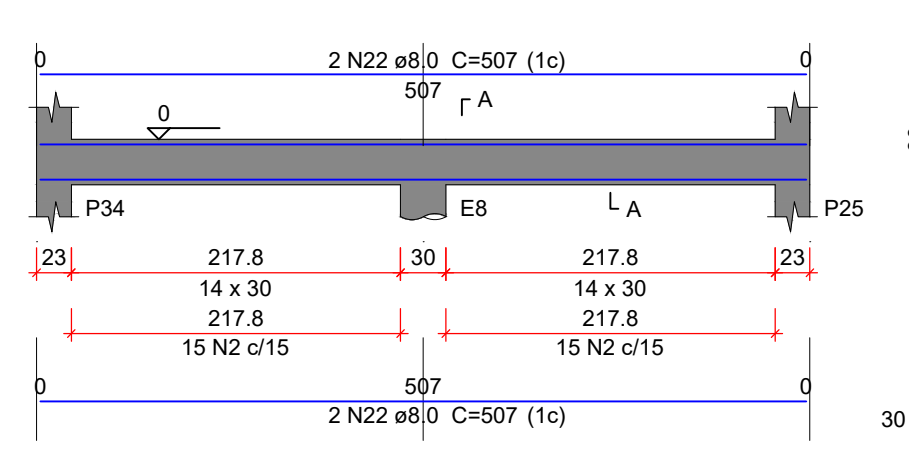
VB23

ESC 1:50



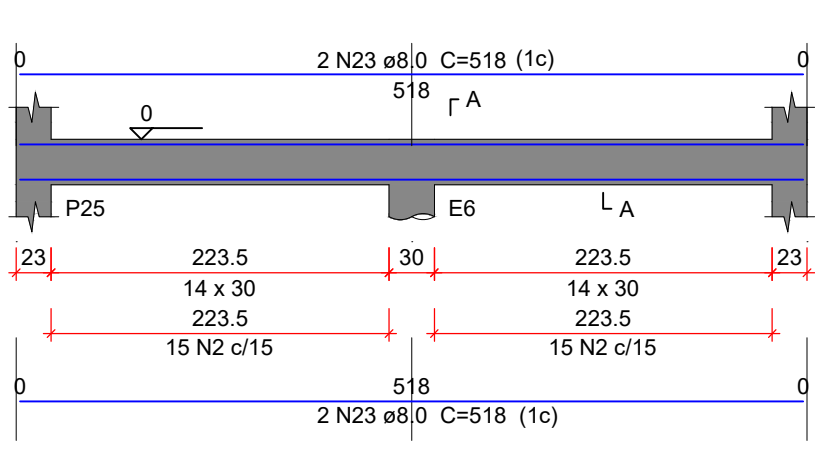
VB24

ESC 1:50



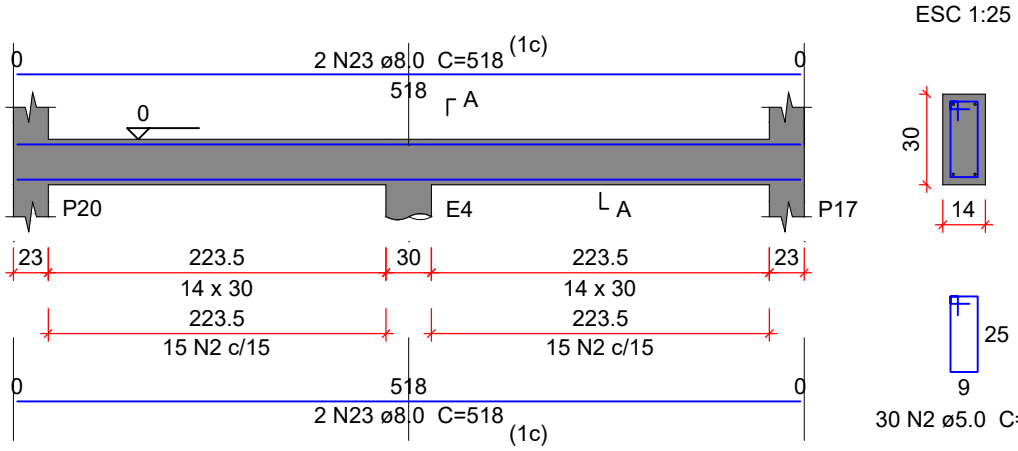
VB25

ESC 1:50



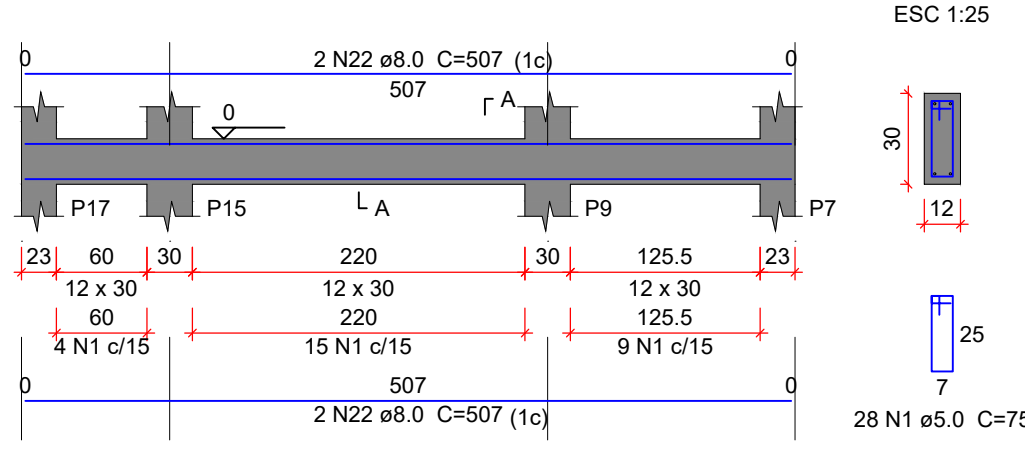
VB26

ESC 1:50



VB27

ESC 1:50



Relação do aço

AÇO	N	DIAM (mm)	QUANT	C.UNIT (cm)	C.TOTAL (cm)
VB1	1	5.0	612	75	45900
VB4	2	5.0	150	79	11850
VB5	3	6.3	8	105	840
VB7	4	8.0	2	689	1378
VB8	5	8.0	2	699	1398
VB10	6	8.0	2	854	1708
VB11	7	8.0	2	860	1720
VB13	8	8.0	4	197	788
VB14	9	8.0	4	209	836
VB16	10	8.0	4	696	2784
VB17	11	8.0	2	711	1422
VB18	12	8.0	2	712	1424
VB19	13	8.0	4	123	492
VB20	14	8.0	4	135	540
VB21	15	8.0	4	523	2092
VB22	16	8.0	4	707	2828
VB23	17	8.0	4	855	3420
VB24	18	8.0	2	154	308
VB25	19	8.0	2	175	350
VB26	20	8.0	4	853	3412
VB27	21	8.0	4	428	1712
VB28	22	8.0	16	507	8112
VB29	23	8.0	16	518	8288
VB30	24	8.0	2	343	686
VB31	25	8.0	2	356	712
VB32	26	8.0	8	438	3504
VB33	27	8.0	4	458	1832
VB34	28	8.0	4	337	1348

Resumo do aço

AÇO	DIAM (mm)	C.TOTAL (m)	PESO + 10 % (kg)
CA50	6.3	8.4	2.3
CA60	8.0	531	230.5
CA60	5.0	577.5	97.9
PESO TOTAL (kg)			
CA50	232.7		
CA60	97.9		

Volume de concreto (C-25) = 4.24 m³  
Área de forma = 82.48 m²

ORGÃOS PÚBLICOS

## PROJETO ESTRUTURAL

TIPO DE EMPREENDIMENTO	DATA
PÚBLICO	OUT/2025
CONTEÚDO	PRANCHA
VIGAS BALDRAME	04/07



PREFEITURA DO MUNICÍPIO DE MERCEDES  
DEPARTAMENTO DE ENGENHARIA

RUA DR. OSVALDO CRUZ, 555 CEP 85998-000 MERCEDES-PR FONE: (45) 3256-8045

PROJETO:	ENG. CIVIL CRISTIAN COMIN CREA: PR -214577 / D
EXECUÇÃO:	
PROPRIETÁRIO:	MUNICÍPIO DE MERCEDES CNPJ: 95.719.373/0001-23

OBRA: BARRAÇÃO PRÉ-MOLDADO - 240M2  
LOCAL: ESTRADA VICINAL RURAL DA LINHA SANGA ALEGRE - LOTE RURAL 56/B - 38" PER. - MERCEDES / PR  
PROPRIETÁRIO: MUNICÍPIO DE MERCEDES